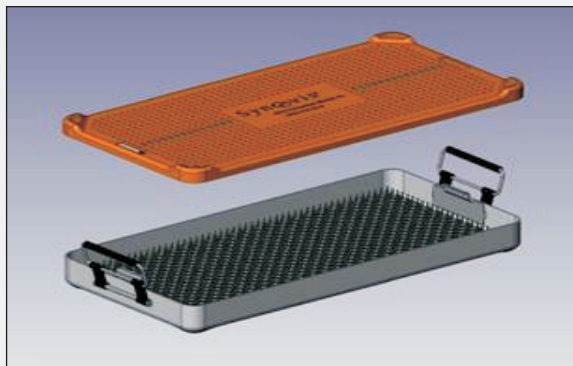


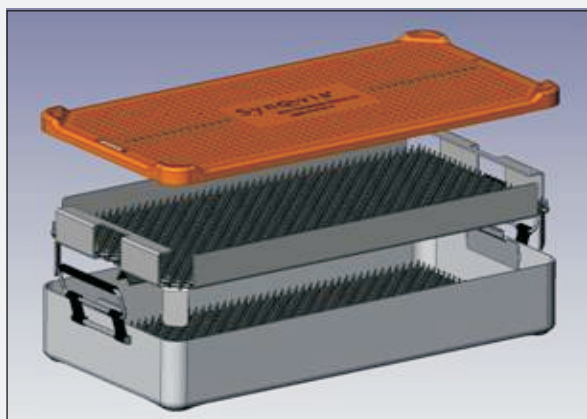
GEM Micro Trays: Orange means Micro



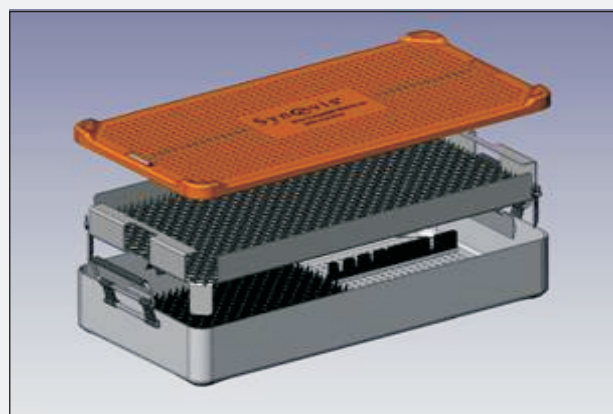
GEM2551
Single layer tray, full finger mat



GEM2551C
Single layer tray, finger mat and
instrument bars*



GEM2551-2
Double layer tray, full finger mat



GEM2551-2C
Double layer tray, upper tier tray
finger mat, lower tier tray finger
mat and instrument bars*

*For GEM COUPLER instruments and MicroClip Applicators

To place an order or for technical support, please contact Synovis MCA at 1- 800- 510- 3318.

Please visit our website for additional products at www.synovismicro.com.

439 Industrial Lane, Birmingham, AL 35211- 4464 Tel: 205- 941- 0111 or 800- 510- 3318 Fax: 205- 941- 1522

Synovis®

Micro Companies Alliance, Inc.

"the micro surgeon's most trusted resource®"